



# GFI FAXmaker

**for Exchange/SMTP**  
Network fax server for Exchange/SMTP

Faxing manually is out of date. A professional fax server grants substantial savings on cost and improves customer service and image: The process of sending a fax is much shorter and incoming faxes are automatically integrated with today's 'email-based' workflow.

With over 100,000 fax servers shipped since its launch, and numerous prestigious industry awards to its name, GFI FAXmaker is the leading enterprise quality fax server when it comes to reliability, ease of use and administration, and price.

GFI FAXmaker for Exchange/SMTP excels in its seamless integration with your mail server. This allows users to send and receive faxes and SMS/text messages directly from their email client, making GFI FAXmaker easy to use and learn. Leveraging your email infrastructure and Active Directory also allows for unparalleled scalability, reliability and hassle-free administration.

#### **Active Directory integration reduces administration**

GFI FAXmaker for Exchange/SMTP was designed from the ground up to minimize its administration. It integrates with Active Directory and therefore does not require the administration of a separate fax user database. User-related settings can be applied to Windows users or groups directly.

#### **Supports Microsoft Exchange 2000/2003/5.5**

GFI FAXmaker integrates with Exchange Server 2000/2003 via a standard Exchange SMTP connector. **There are no schema updates to Active Directory.** This makes GFI FAXmaker scalable and indifferent to new Exchange service packs and versions. Microsoft Exchange 5.5 is supported by creating a routing rule on the Exchange 5.5 SMTP connector. GFI FAXmaker can be installed on the Exchange server (if using 2000/2003), or on a separate machine, in which case no software has to be installed on the Exchange server itself!

#### **Features & benefits**

Best fax integration available for your mail server

Minimal administration and user training required

The most popular fax server, voted #1 by Windows IT Pro readers 3 years running

Unbeatable pricing: USD 1250 for 25, USD 1995 for 50, USD 5995 for unlimited users.

#### **Fax over IP (FOIP) support**

GFI FAXmaker offers Fax over IP (FOIP) functionality enabling you to send faxes over the Internet whilst easily integrating with the existing IP infrastructure, such as IP-enabled PABXs. GFI FAXmaker's FOIP may also be used to implement Least Cost Routing (LCR); this results in cost-effectiveness that is achieved through a reduction in international calls dialed since calls are translated into a local call at the recipient's country. FOIP may only be employed if the appropriate FOIP-enabled software or devices are installed.

#### **Supports Lotus Notes & SMTP/POP3 servers**

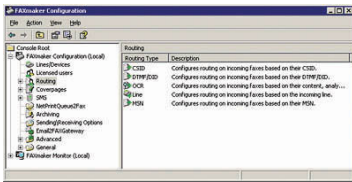
GFI FAXmaker integrates via the SMTP/POP3 protocol with Lotus Notes and any SMTP/POP3 server. It can be installed on the mail server itself or on a separate machine. In the case of Lotus Notes, @FAX addressing is supported.

#### **Automated fax delivery/inbound fax routing**

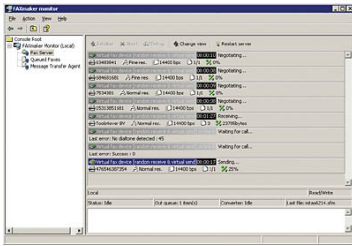
GFI FAXmaker can automatically route incoming faxes to the user's mailbox or to a particular printer based on a DID/DDI/DTMF number or the line on which the fax was received. Faxes can also be forwarded to a public folder or assigned to a network printer per installed fax port.

#### **SMS/texting gateway allows users to send SMS/text messages from their desktop**

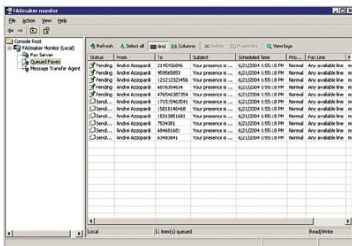
GFI FAXmaker's SMS gateway enables network users to send SMS messages from their desktop; this allows them to easily contact business colleagues and associates who are on the road or away from their desk. Using the SMS gateway rather than a mobile phone is faster (no need to use the phone pad) and saves users the cost of the SMS message. SMS messages can either be sent via an Internet-based SMS service or through a mobile phone or PCMCIA mobile card. The SMS gateway can also be used for administrative alerts, for example, to notify an administrator of critical system outages or application problems. Any email-enabled application can send SMS messages via the GFI FAXmaker SMS gateway. A central log of SMS messages permits the control of SMS use.



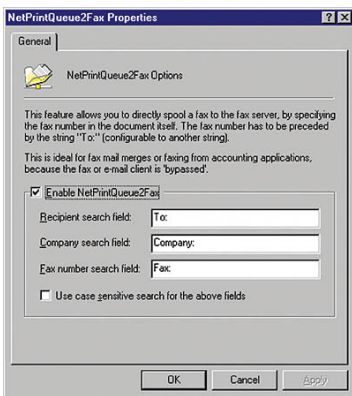
GFI FAXmaker configuration



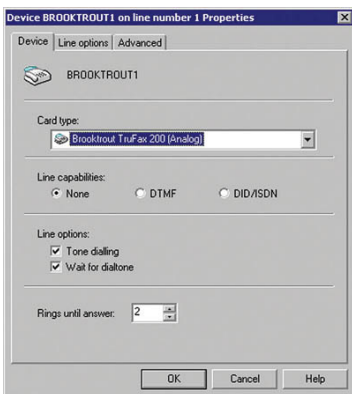
The GFI FAXmaker server monitor



Monitor fax queue



Easy application integration using NetPrintQueue2FAX



Supports Brooktrout and ISDN fax cards and modems

## Supports multiple mail servers & clustering

Because of its flexible infrastructure, GFI FAXmaker can send and receive faxes for users on different mail servers. It can also support a mix of Exchange 5.5, Exchange 2000/2003 servers or even SMTP/POP3 servers. Active and passive clustering is fully supported because GFI FAXmaker does not require any software to be installed on the mail server itself; simply configure both mail servers in the cluster to be able to send and receive faxes via GFI FAXmaker.

## Robust & scalable multi-line fax server

GFI FAXmaker includes a robust fax server, which can scale up to 32 lines per fax server using fax boards or active ISDN cards. For smaller installations, Fax modems can be used as well. GFI FAXmaker also supports the use of the Windows 2000/XP/2003 fax drivers for wider hardware support.

## Native ISDN support

GFI FAXmaker natively supports ISDN, allowing you to use inexpensive active ISDN cards and get multi-line faxing and inbound routing at a fraction of the price of using multi-line fax boards.

## Archive faxes to GFI MailArchiver, to SQL, or other archiving solution

GFI FAXmaker allows you to archive all faxes to GFI MailArchiver, a SQL database or to an email address. GFI MailArchiver is an email archiving solution that stores all mails in a SQL database and allows users to easily search for past emails and faxes. GFI FAXmaker can be configured to forward all faxes to GFI MailArchiver, allowing users to search for past faxes in the same way as emails. With the OCR module, faxes can also be searched based on what text they contained.

## Optional OCR reading & routing module

The optional OCR module can be used to convert all incoming faxes to a readable text format using Optical Character Recognition (OCR) technology and then route the fax to the correct user by finding keywords related to a recipient, for example his first name, last name or job function. If GFI FAXmaker cannot match a recipient, it will route the fax to the default recipient/router. This feature is also especially handy if you plan to archive all faxes, since it makes searching for a particular fax much easier.

## Junk fax filter

GFI FAXmaker includes a 'junk fax filter' that can auto-delete spam faxes on the basis of sender number.

## Send faxes from any application

To send a fax, users print from their word processor to the GFI FAXmaker printer, or create a new message in their email client (e.g., Outlook or Outlook Web Access). The user then selects the recipient(s) of the fax from the Outlook Contacts list (address book) or enters the fax number directly. After clicking on the "Send" button, the fax is sent and the user receives a transmission report in his/her inbox.

## Receive faxes in your email client – in fax or PDF format

GFI FAXmaker delivers faxes to the user's inbox in TIF – fax – format or Adobe PDF format. This enables users to check faxes from anywhere in the world, using either a normal desktop email client (for example, Outlook) or a web-based email client (for example, Outlook Web Access). Receiving faxes in PDF format means the fax can be forwarded to anybody, and it also allows for easy integration with document archiving systems or workflow software/procedures.

## Allows you to send/receive faxes via your handheld or mobile

Via GFI FAXmaker's Email2Fax Gateway, the email clients of handhelds like the Blackberry and Pocket PC (2003 upwards) can be used to send faxes. The Blackberry and Pocket PC email clients can also receive faxes and fax reports as emails. The Blackberry devices have built-in PDF viewer that seamlessly integrate with GFI FAXmaker's PDF capabilities; most Pocket PC 2003 also ship with built-in PDF viewers. As long as they have image-viewing capabilities to view received faxes, GPRS mobile (cell) phones that are email-compliant can use GFI FAXmaker in the same way as handhelds.

## Supports Outlook Contacts

There is no need to keep a separate fax address book - just select the recipient's "Business Fax" entry from the Outlook Contacts list or the Global Address Book: No need to duplicate address entries.

## Attach Office documents, PDF, HTML and other files

Users can attach Microsoft Office, PDF, HTML and other files to their fax. These are rendered to fax format on the fax server. The 'Send to Mail Recipient' command, available in Microsoft Office and other applications, can therefore also be used to quickly send a document as a fax.

## Automatic application integration & mail merges with NetPrintQueue2FAX

GFI FAXmaker's NetPrintQueue2FAX feature allows you to embed a fax number in a document and 'print to fax' from almost any application, from anywhere in the network - without having to enter the fax number separately. This feature is especially handy for accounting applications; an invoice can be faxed simply by embedding the fax number in the document. No application integration or development is required.

## Fax broadcasting using Microsoft Office mail merge

Using the mail merge facility of Microsoft Word/Office, you can send personalized fax broadcasts. Because Microsoft Office supports ODBC, the recipient list can be retrieved from any data source, including Microsoft SQL Server, Microsoft Access and many more.

## Support for Citrix

The GFI FAXmaker client can run on a Citrix terminal server. That way Citrix users can send faxes when logged on Citrix.

## Other features:

- Real time fax over IP using Brooktrout TR1034 cards
- HP Digital Sender support: Easily fax paper documents via GFI FAXmaker
- Fax annotation
- Automatically print transmission reports including miniatures of the fax
- Preview a fax
- Text API allows for easy application integration
- Supports rendering of HTML format messages
- No schema updates
- Auto-print faxes on different network printers based on routing rules
- Call accounting: Analyze fax costs using Microsoft Excel
- Routing of faxes to other FAXmaker server for least cost routing (LCR) by means of SMTP
- Support for Windows 2000/XP/2003 fax drivers
- Design coversheets in HTML or in RTF (Microsoft Word) format
- Remote fax server monitoring.

## Reviews



**GFI FAXmaker wins Readers' Choice Award as Best Fax Server** - Windows & .NET Magazine readers voted for GFI FAXmaker for Exchange as the Best Fax Server in the Windows & .NET Magazine Readers' Choice Awards for the second consecutive year.

- *Windows & .NET Magazine, September 2003*



**GFI FAXmaker voted Readers' Choice as Best Communication/Collaboration Solution** - .NET Magazine readers selected GFI FAXmaker for Exchange as the Best Communication/Collaboration Solution in the publications' first ever Reader's Choice Awards.

- *.NET Magazine, June 2003*

## System requirements

- Windows 2000/2003/XP server machine with at least 256 MB of RAM and an 800 MHz processor.
- A professional fax device: For a complete list go to <http://kbase.gfi.com/showarticle.asp?id=KBID001220>.
- If you are installing GFI FAXmaker on a separate machine, the IIS SMTP service will need to be installed.
- If using Windows 2000, ensure you have Service Pack 3 or later installed.
- For more detailed system requirements please see the manual.

Download your evaluation version from <http://www.gfi.com/faxmaker/>

GFI Software  
Unit 2, St. John's Mews  
St. John's Rd, Hampton Wick  
Kingston-upon-Thames  
Surrey KT1 4AN, UK  
Tel +44 (0) 870 770 5370  
Fax +44 (0) 870 770 5377  
sales@gfi.co.uk

GFI Software  
15300 Weston Parkway  
Suite 104  
Cary, NC 27513  
USA  
Tel +1 (888) 243-4329  
Fax +1 (919) 379-3402  
sales@gfiusa.com

GFI Software  
Bargkoppelweg 72  
22145 Hamburg  
Germany  
Tel +49(0) 40 3068 1000  
Fax +49(0) 700 3068 1010  
sales@gfisoftware.de

GFI Asia Pacific  
83 King William Road  
Unley 5061  
South Australia  
Tel +61 8 8273 3000  
Fax +61 8 8273 3099  
sales@gfiap.com

GFI Software  
GFI House  
San Andrea Street  
San Gwann SGN 05 Malta  
Tel +356 21 382418  
Fax +356 21 382419  
sales@gfi.com

Microsoft  
GOLD CERTIFIED  
Partner

